

DATA SHEET

Single Phase Induction Motor - Squirrel Cage



Customer : WEG ECUADOR S.A.S.

Product line : W01 - ODP - Compressor Duty Standard
Efficiency

Frame	: 56	Locked rotor time	: 10 s (hot) 18 s (cold)
Output	: 1 HP (0.75 kW)	Temperature rise	: 80 K
Poles	: 2	Duty cycle	: S1
Frequency	: 60 Hz	Ambient temperature	: -20 °C to +40 °C
Rated voltage	: 115/208-230 V	Altitude	: 3280 ft
Rated current	: 13.2/6.50-6.60 A	Protection degree	: IP21
L. R. Amperes	: 76.6/37.7-38.3 A	Cooling method	: IC01 - ODP
LRC	: 5.8	Mounting	: F-1/B3R(D)
No load current	: 10.0/4.31-5.00 A	Rotation ¹	: Both
Rated speed	: 3485 rpm	Noise level ²	: 58.0 dB(A)
Slip	: 3.19 %	Vibration class	: A
Rated torque	: 1.49 ft.lb	Starting method	: Direct On Line
Locked rotor torque	: 165 %	Approx. weight ³	: 0.0 lb
Pull up torque	: 140 %	Painting plan	: 207N
Breakdown torque	: 250 %	Color	: MUNSELL N 1 - MATTE
Insulation class	: F	Design	: N
Service factor	: 1.00		
Moment of inertia (J)	: 0.0403 sq.ft.lb		

Output	50%	75%	100%	Load type	: -
Efficiency (%)	58.3	65.2	66.5	Load torque	: -
Power Factor	0.54	0.65	0.74	Load inertia (J=GD ² /4)	: -

Bearing type	Drive end	Non drive end	Foundation loads	
Lubrication interval	6204-ZZ	6202-ZZ	Max. traction	: -
Lubricant amount	-	-	Max. compression	: -
Lubricant type	MOBIL POLYREX EM			

Notes
See notes on page 2.

This revision replaces and cancel the previous one, which must be eliminated.
(1) Looking the motor from the shaft end.
(2) Measured at 1m and with tolerance of +3dB(A).
(3) Approximate weight, subject to be changed after manufacturing process.

These are average values based on tests with sinusoidal power supply, subject to the tolerances stipulated in NEMA MG 1-12.

Rev.	Changes Summary	Rev.	Checked	Date
Performed by	paulp	1465259190		
Checked by	AUTOMATICO	Page	Rev.	
Date	30/11/2023	1 / 2	0	

DATA SHEET

Single Phase Induction Motor - Squirrel Cage



Customer : WEG ECUADOR S.A.S.

Product line : W01 - ODP - Compressor Duty Standard
Efficiency

Thermal protection

ID	Application	Type	Quantity	Sensing Temperature
----	-------------	------	----------	---------------------

Notes

Standards

Specification : MG1 - Part 10
Test : MG1 - Part 12
Noise : MG1 - Part 9

Vibration : MG1 - Part 7
Tolerance : MG1 - Part 12

This revision replaces and cancel the previous one, which must be eliminated.

- (1) Looking the motor from the shaft end.
- (2) Measured at 1m and with tolerance of +3dB(A).
- (3) Approximate weight, subject to be changed after manufacturing process.

These are average values based on tests with sinusoidal power supply, subject to the tolerances stipulated in NEMA MG 1-12.

Rev.	Changes Summary	Rev.	Checked	Date
Performed by	paulp	1465259190		
Checked by	AUTOMATICO	Page	Rev.	
Date	30/11/2023	2 / 2	0	

1 2 3 4 5 6

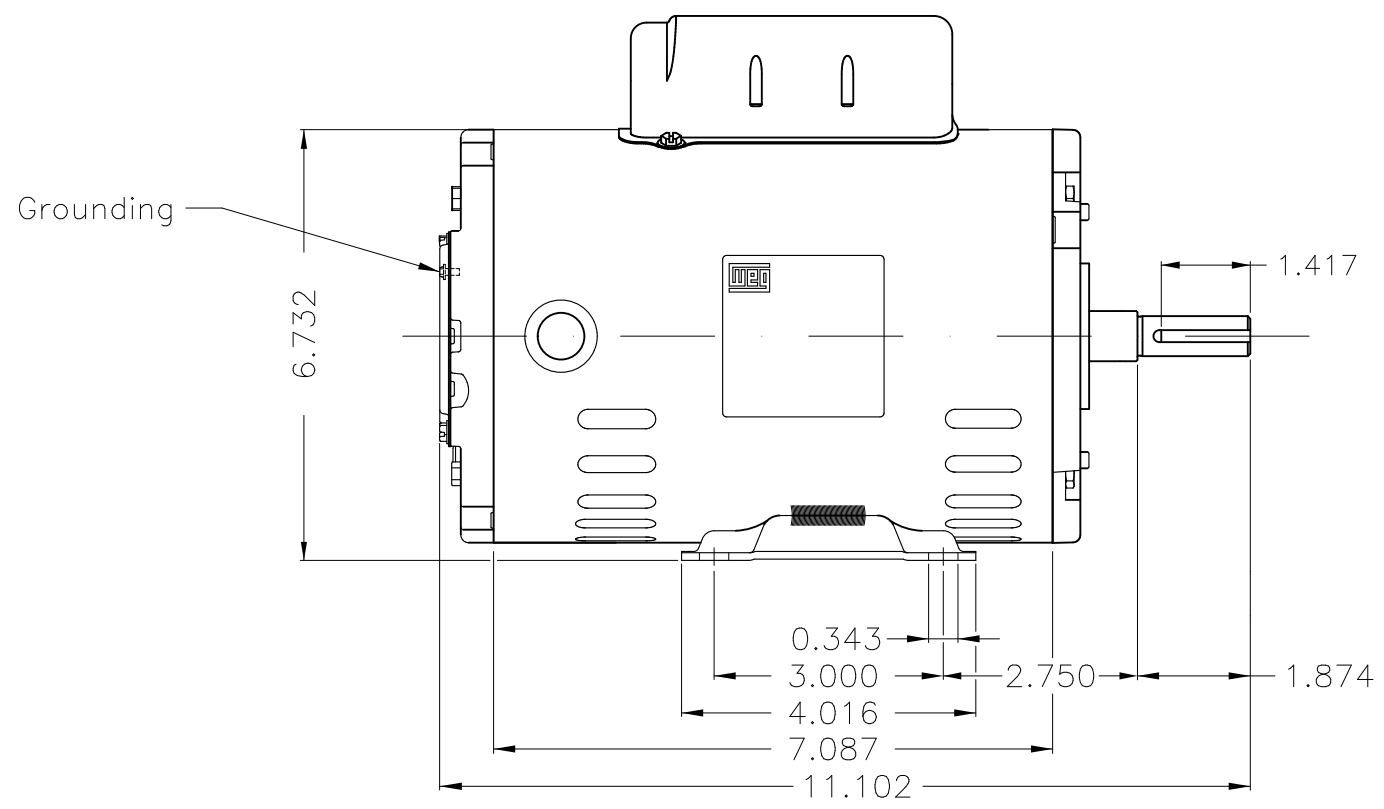
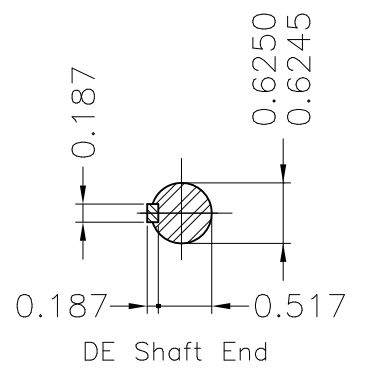
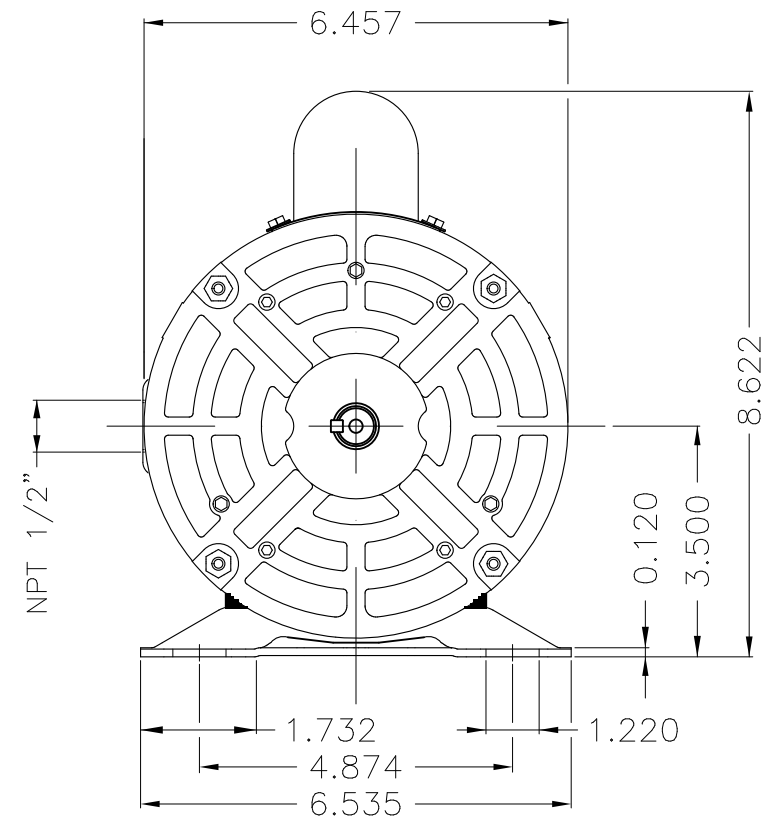
A

B

C

D

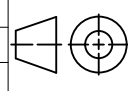
E



Reinforce the foot with 2 mig welding spots

Mounting F-1/B3R(D)

WEG ECUADOR S.A.S.

ECM	LOC	SUMMARY OF MODIFICATIONS	EXECUTED	CHECKED	RELEASED	DATE	VER
EXECUTED	PIRWBUSER	 SINGLE PH. MOTOR ROLLED STEEL COMPRESSOR DUTY FRAME 56 IP21 ODP					00
CHECKED							
RELEASED							
REL. DATE		WMO Jaragua do Sul					

PREVIEW
 WDD 00
 SHEET 1 / 1



1 HP 02 Poles 60 Hz